

# DESIGN PROCESS

*The Ecole des Beaux-Arts Method*

Prof. Brandon Ro, AIA, NCARB  
*Classical Architecture Workshop*

## ESQUISSE

“the critical founding act of design...produced a quick sketch for the ‘parti’ of the building”

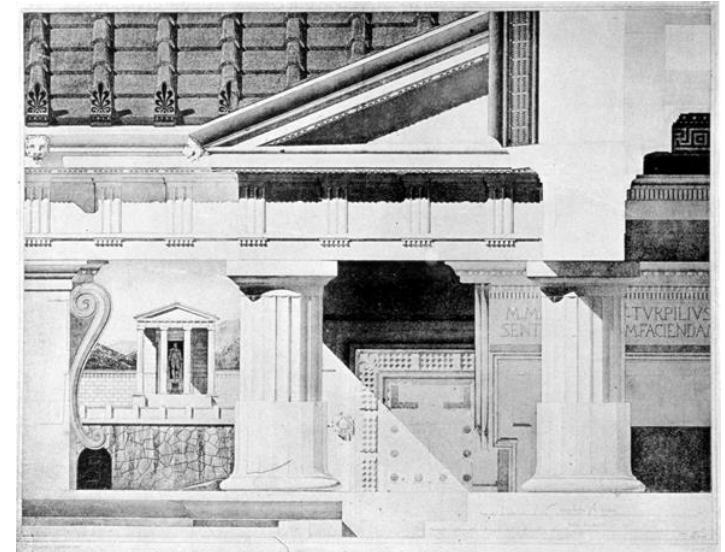
- Student sat in an enclosed space without access to reference materials, teachers, other students
- 6-12 hour design exercise
- 1 page drawing including plan, elevation, section, perspective
- Dealt with the whole architectural scheme, concept, parti
- Method forced design parti from the beginning and kept it during the entire design process



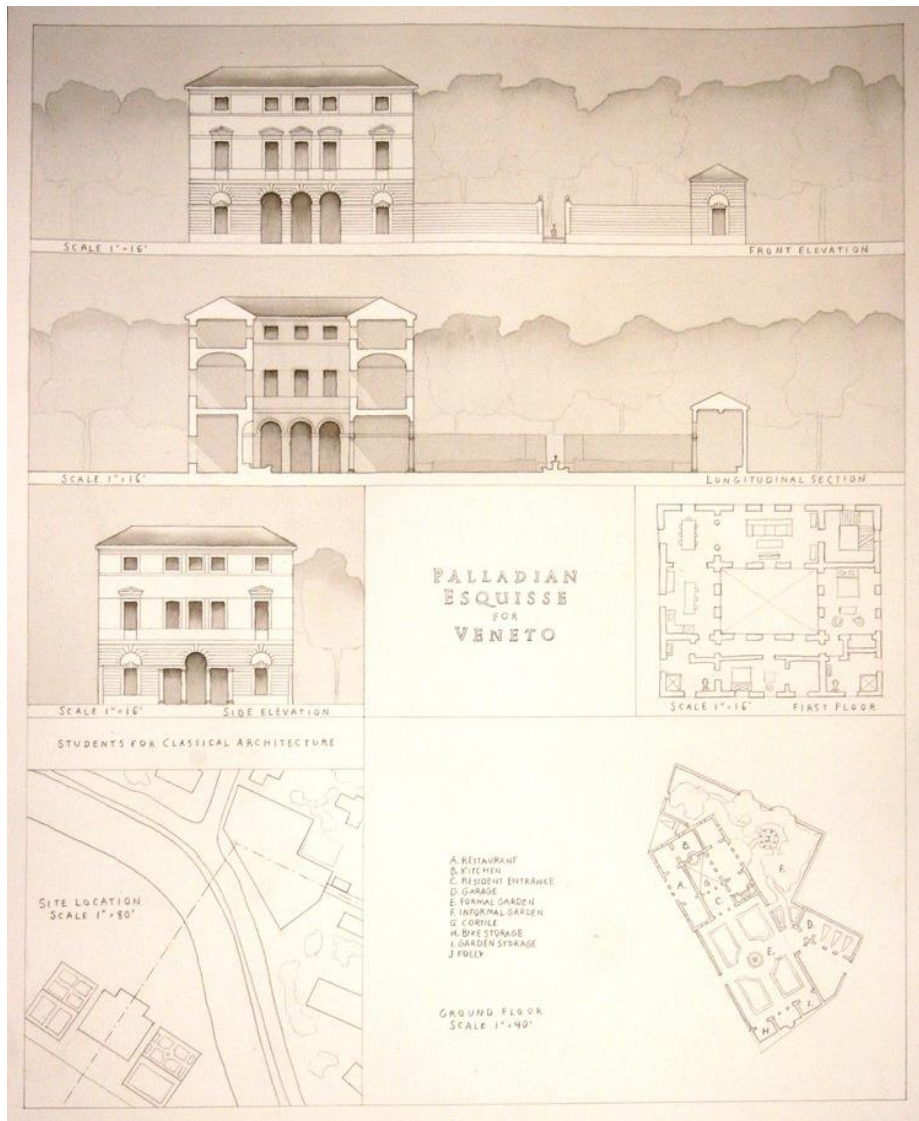
## ANALYTIQUE

“a codified design problem dealing with the basic elements of architecture...the study of architectural elements and their proper combination into an integrated design.”

- 1 page drawing consisting of a composition of ornament, detail, plan, elevation, rendering, etc.
- Dealt with the parts, elements of design

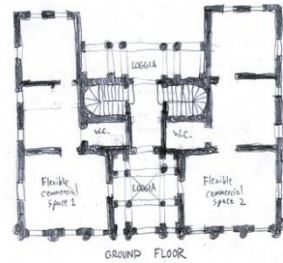
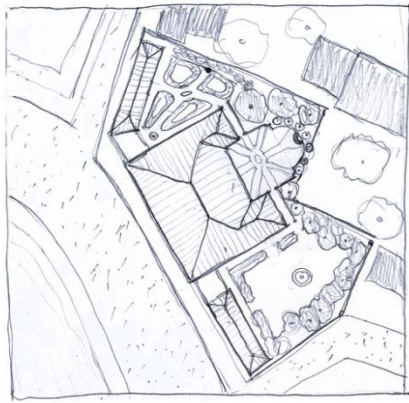


# ÉCOLE DES BEAUX-ARTS CURRICULUM



# 12 HOUR ESQUISSE EXAMPLES





TRANSVERSE SECTION



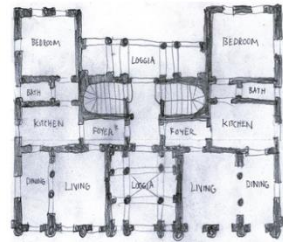
VIEW OF PASS THROUGH  
TOWARD FRONT LOGGIA



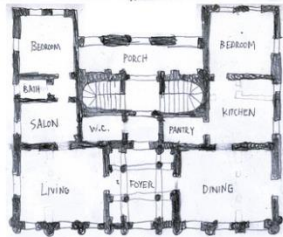
FRONT ELEVATION



REAR ELEVATION



PIANO NOBILE  
(with two (2) one-bedroom  
apartments)



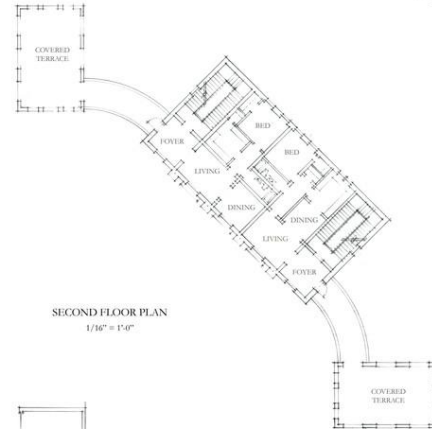
ATTIC FLOOR  
(with one (1) two-bedroom  
luxury apartment)

PALLADIAN MIXED-  
USE BUILDING ESQUISSE

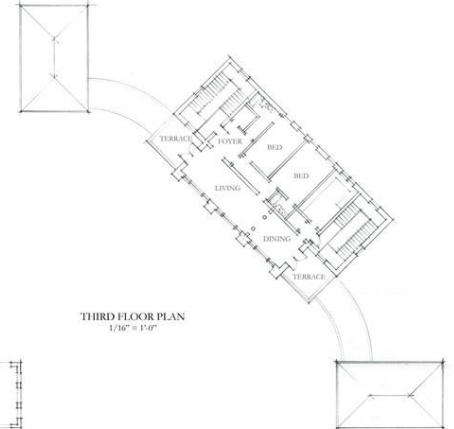
## A CLASSICAL DESIGN ESQUISSE



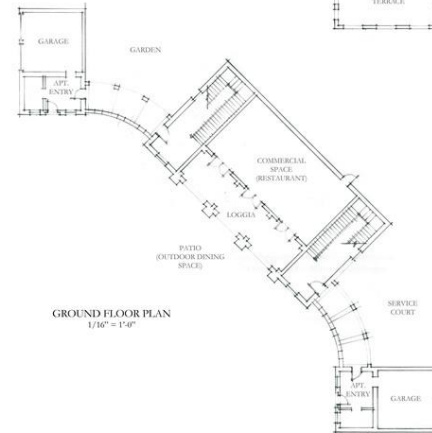
FRONT ELEVATION (APARTMENT ENTRY PAVILLIONS SHOW AS IF FLATTENED)  
1/16" = 1'-0"



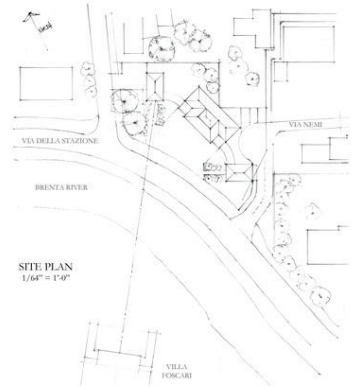
SECOND FLOOR PLAN  
1/16" = 1'-0"



THIRD FLOOR PLAN  
1/16" = 1'-0"



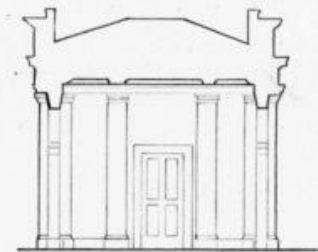
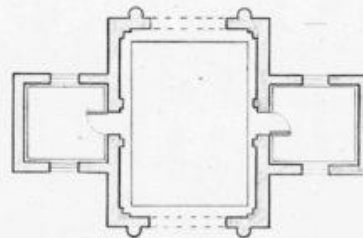
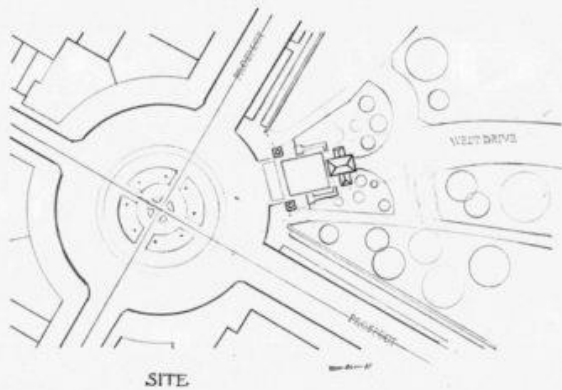
GROUND FLOOR PLAN  
1/16" = 1'-0"



SITE PLAN  
1/64" = 1'-0"

A PROPOSAL FOR A MIXED-USE BUILDING NEAR PALLADIO'S VILLA FOSCARI

# 12 HOUR ESQUISSE EXAMPLES

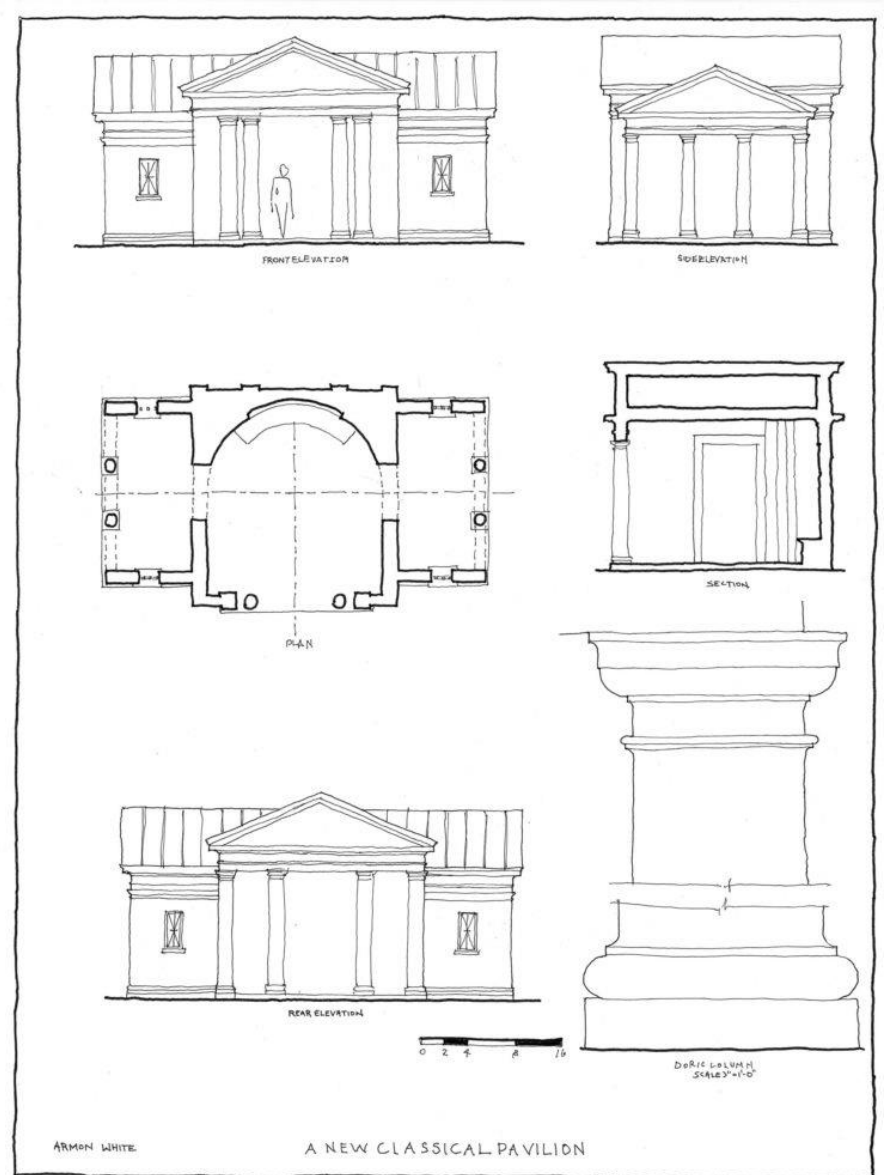
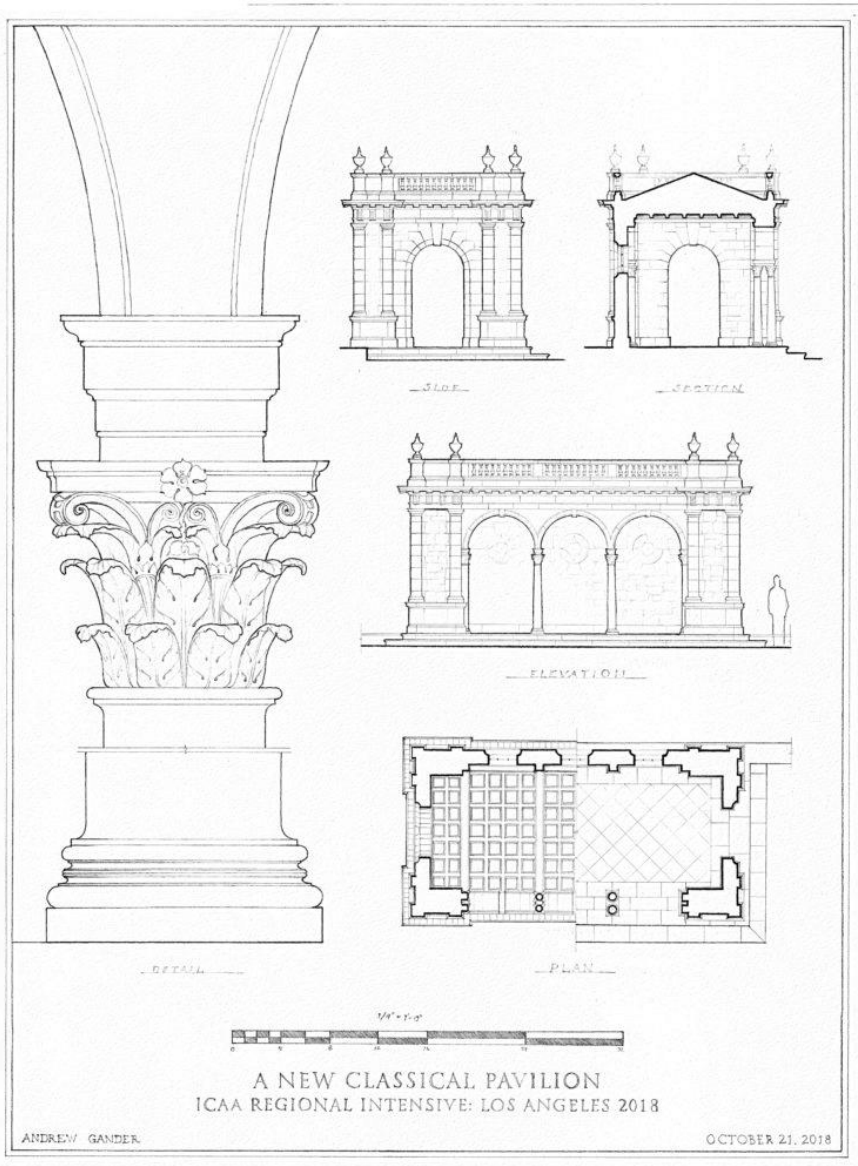


AN ENTRY PAVILION TO PROSPECT PARK

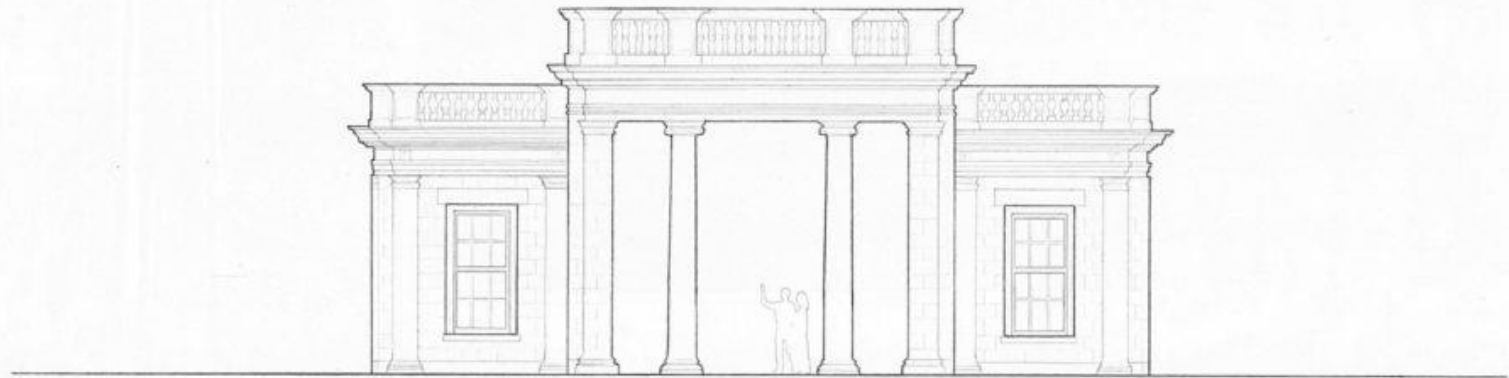
ANDRÉS S. MARTÍNEZ

JULY 14, 2018

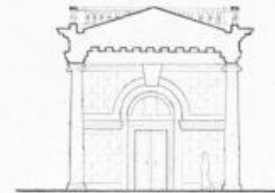
# ESQUISSE EXAMPLES



# ESQUISSE EXAMPLES



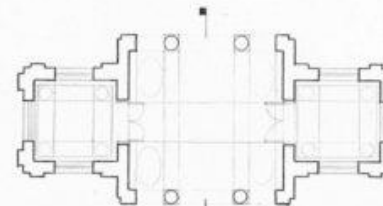
Elevation



Section



Site Plan



Plan

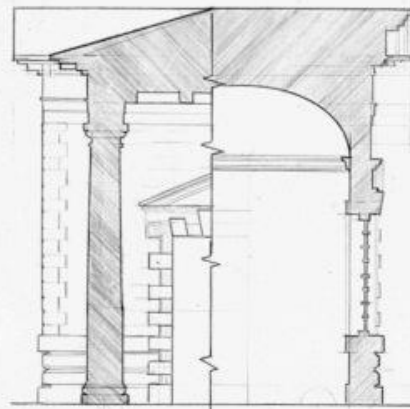


AN ENTRY PAVILION TO PROSPECT PARK

EVAN DZIEDZIC

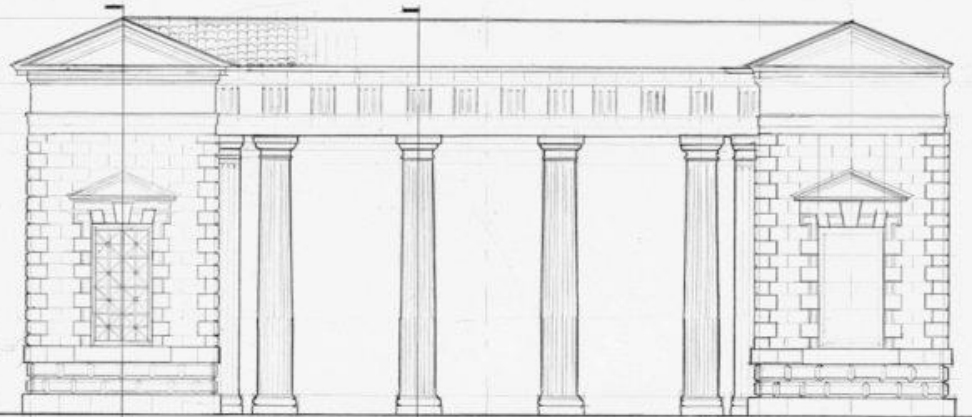
JULY 31, 2018

# ESQUISSE EXAMPLES

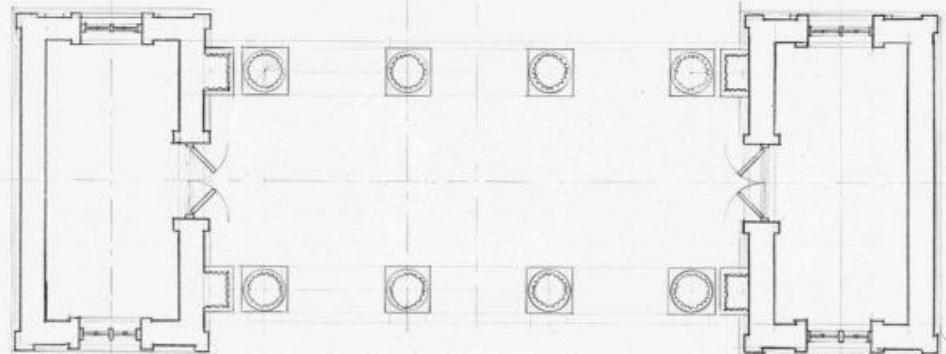
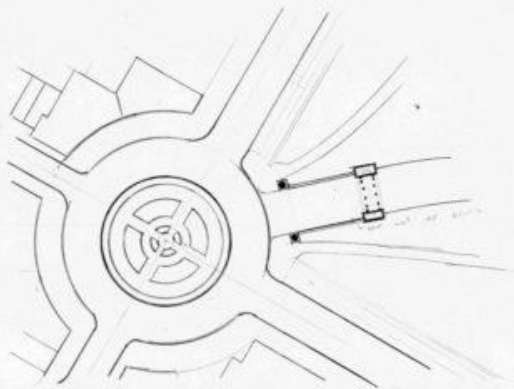


SB-COLUMNNADE

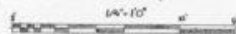
SA-INTERIOR



FRONT ELEVATION



PLAN



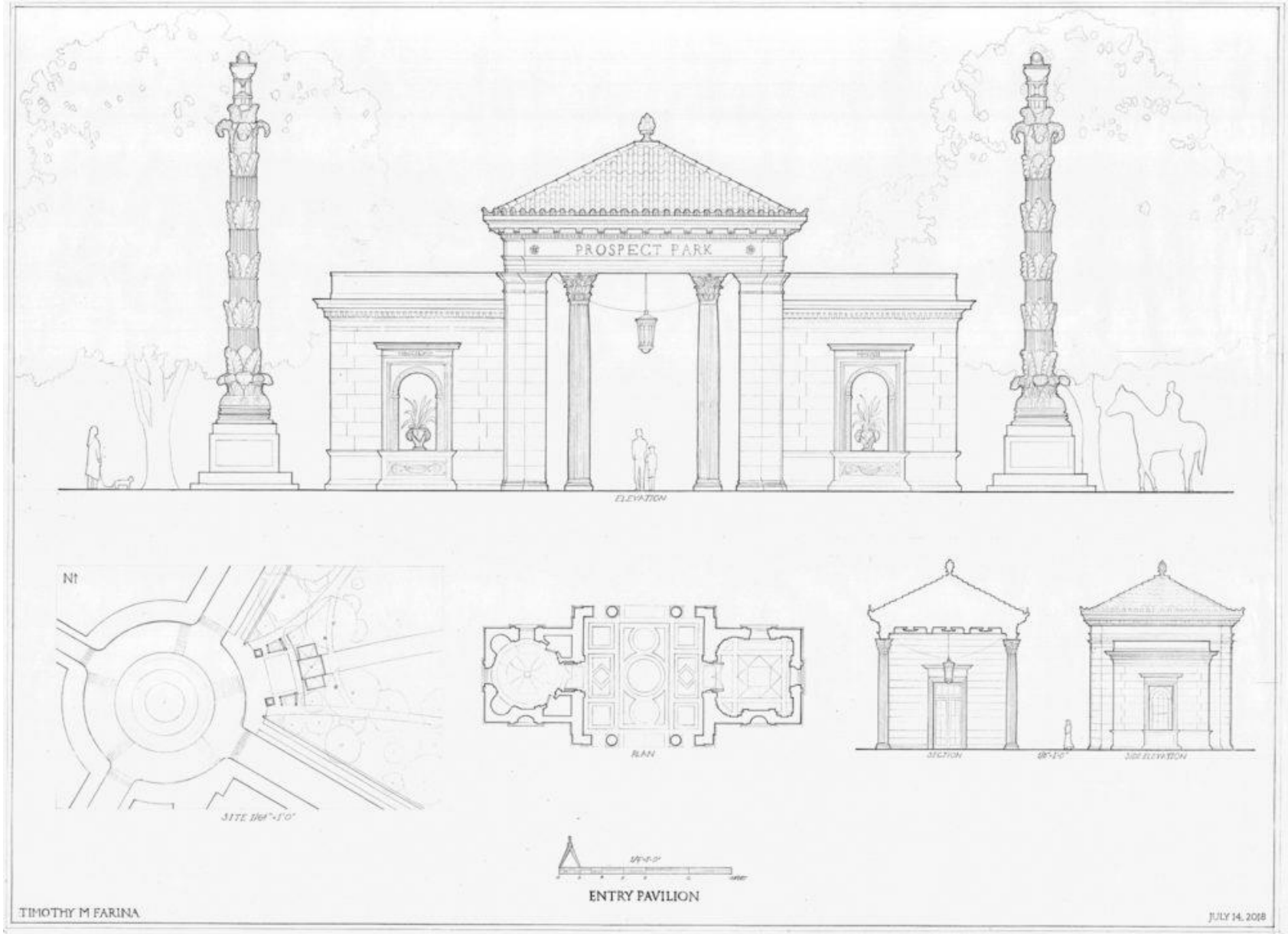
JOE M'LAUGHLIN

AN ENTRY PAVILLION TO PROSPECT PARK

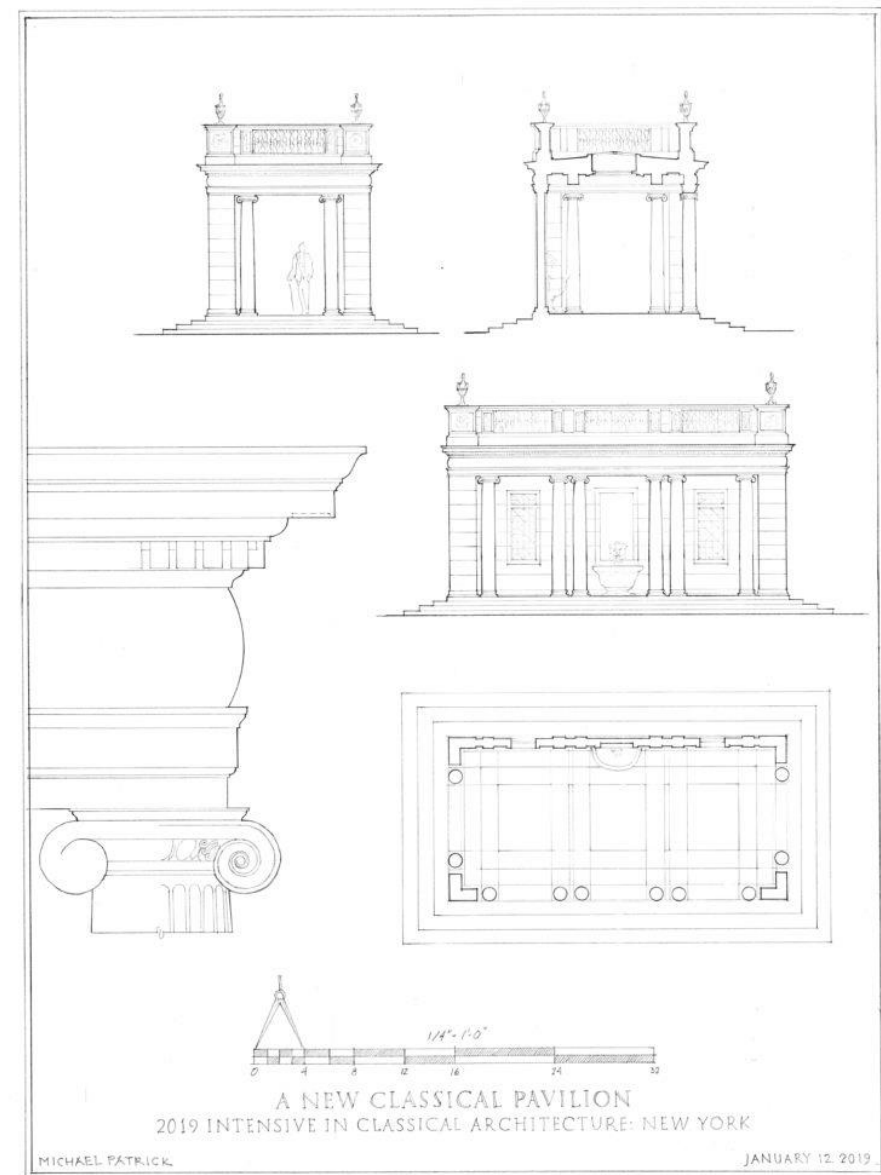
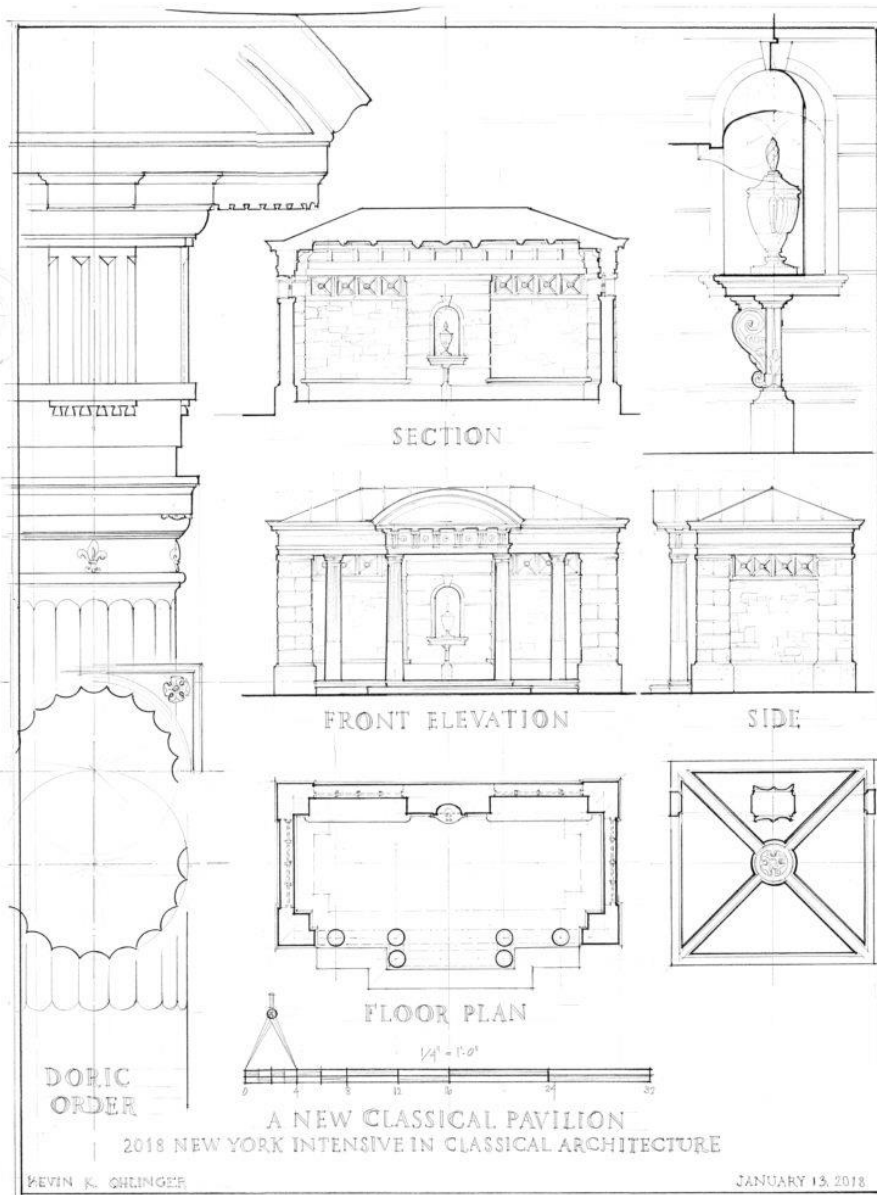
JULY 14, 2010

ESQUISSE EXAMPLES

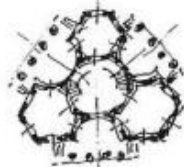
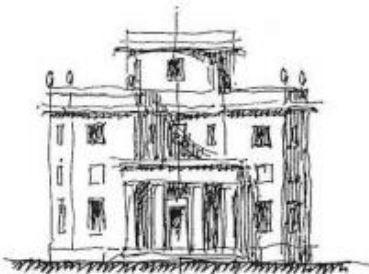
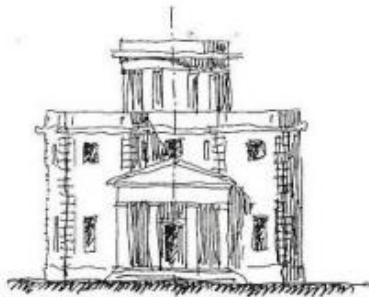


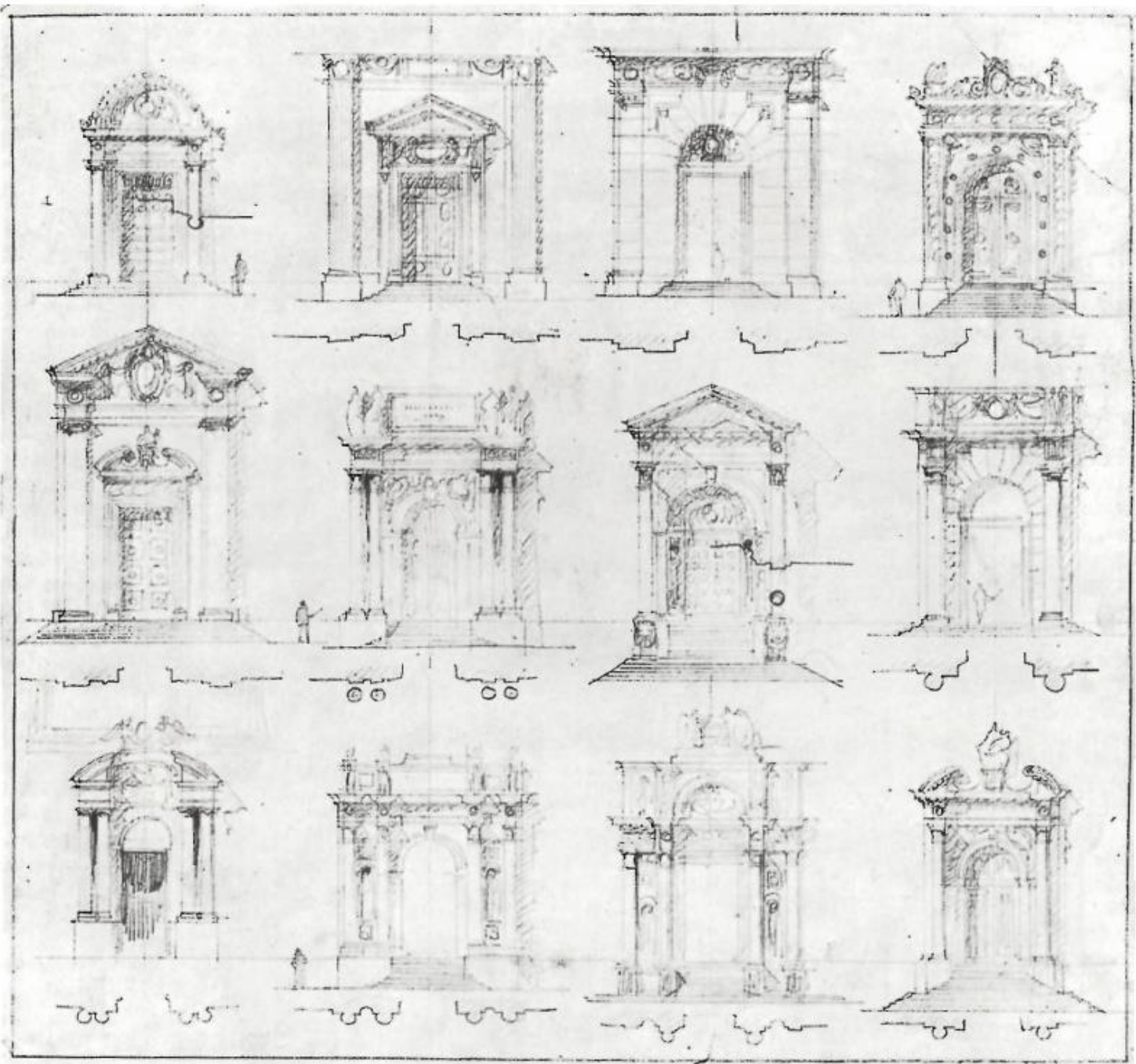


ESQUISSE EXAMPLES



ESQUISSE EXAMPLES







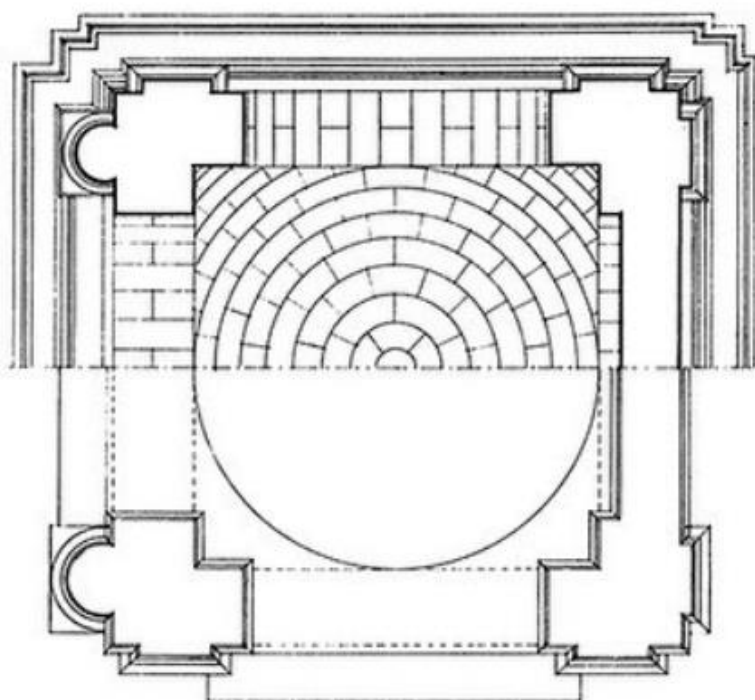
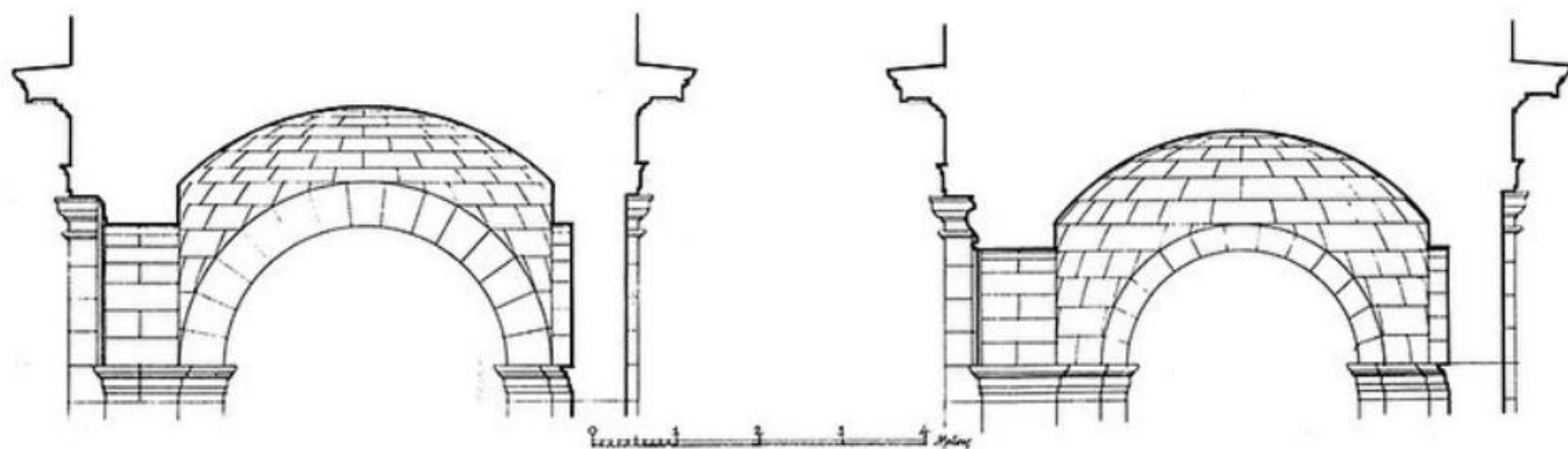


Figure A

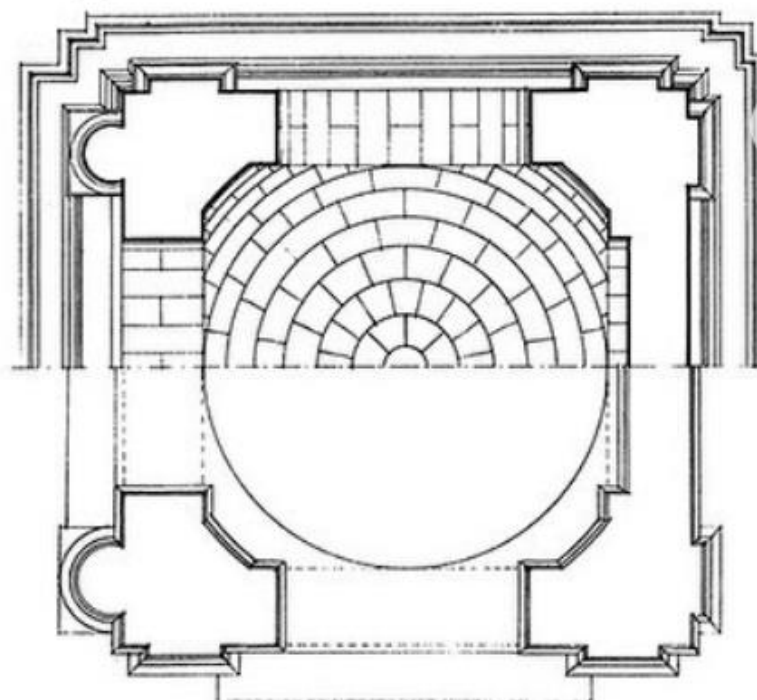


Figure B

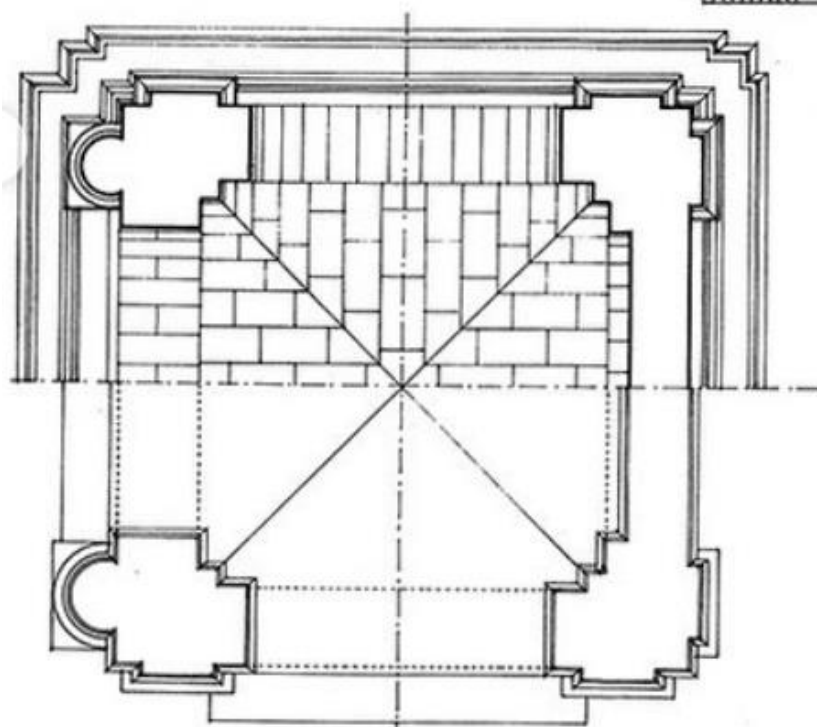
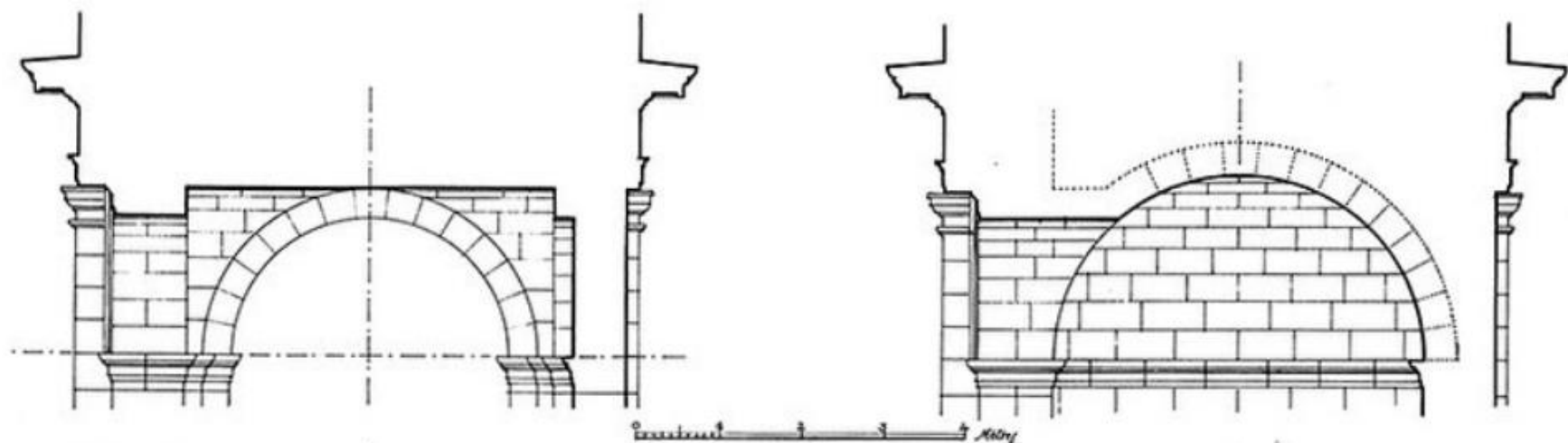


Figure C

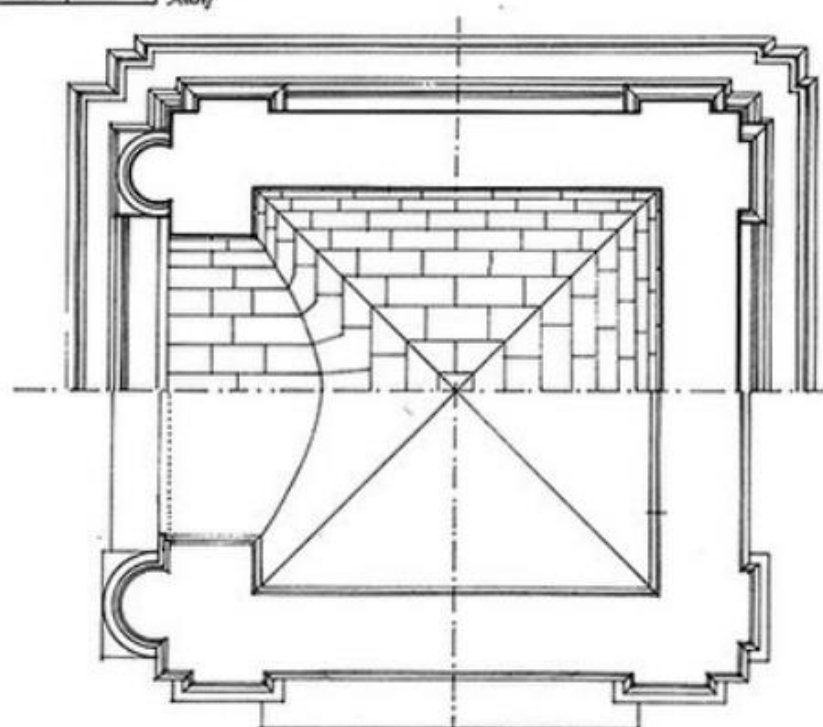
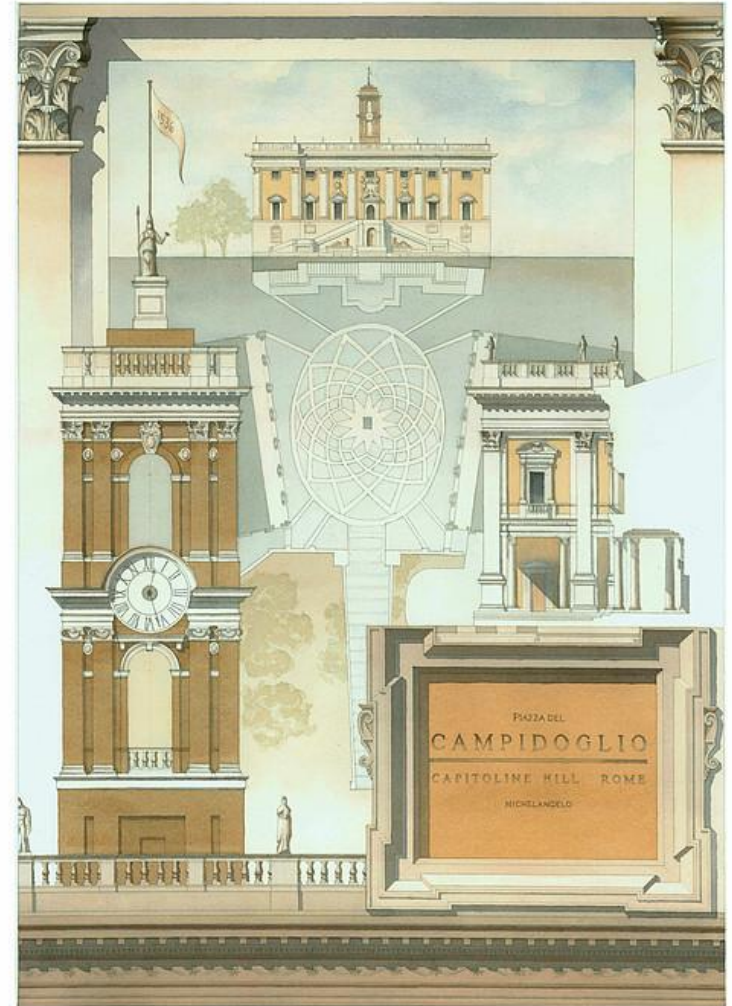
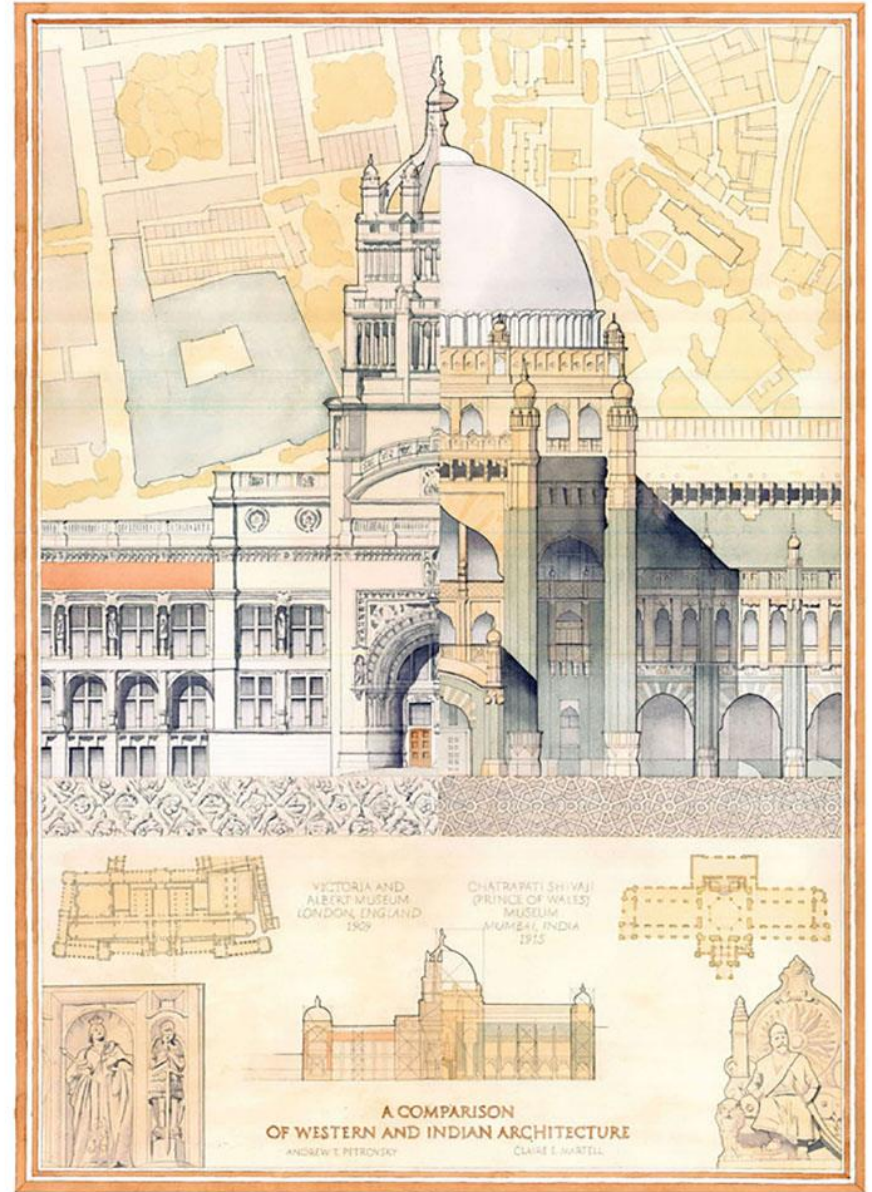
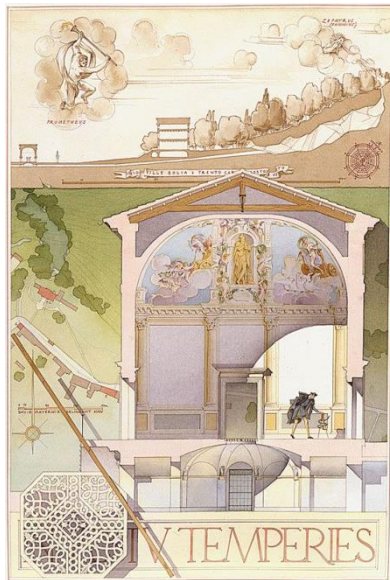
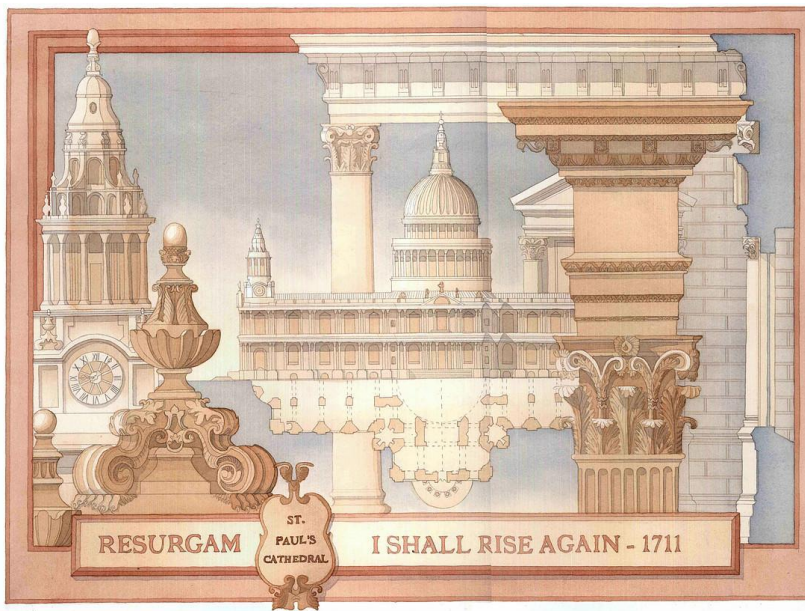


Figure D



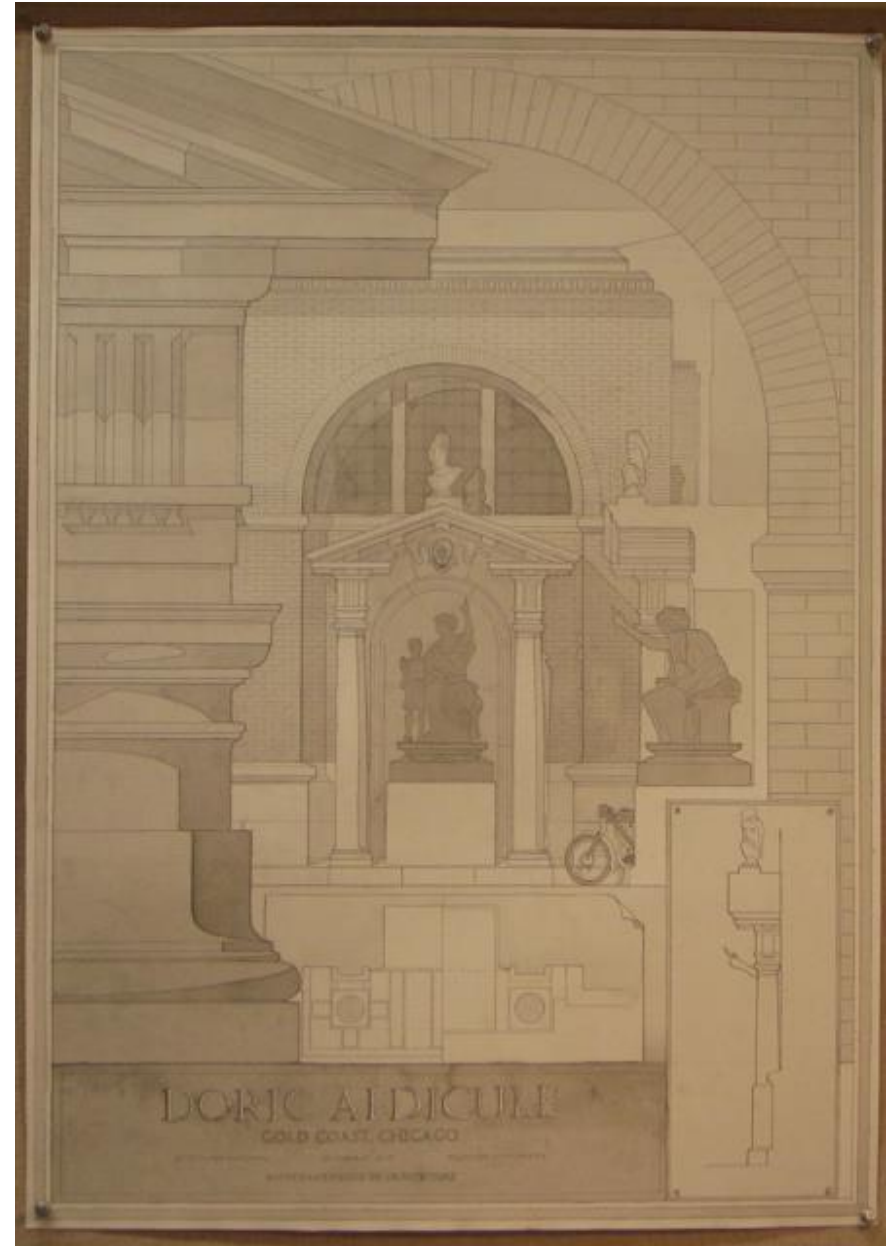
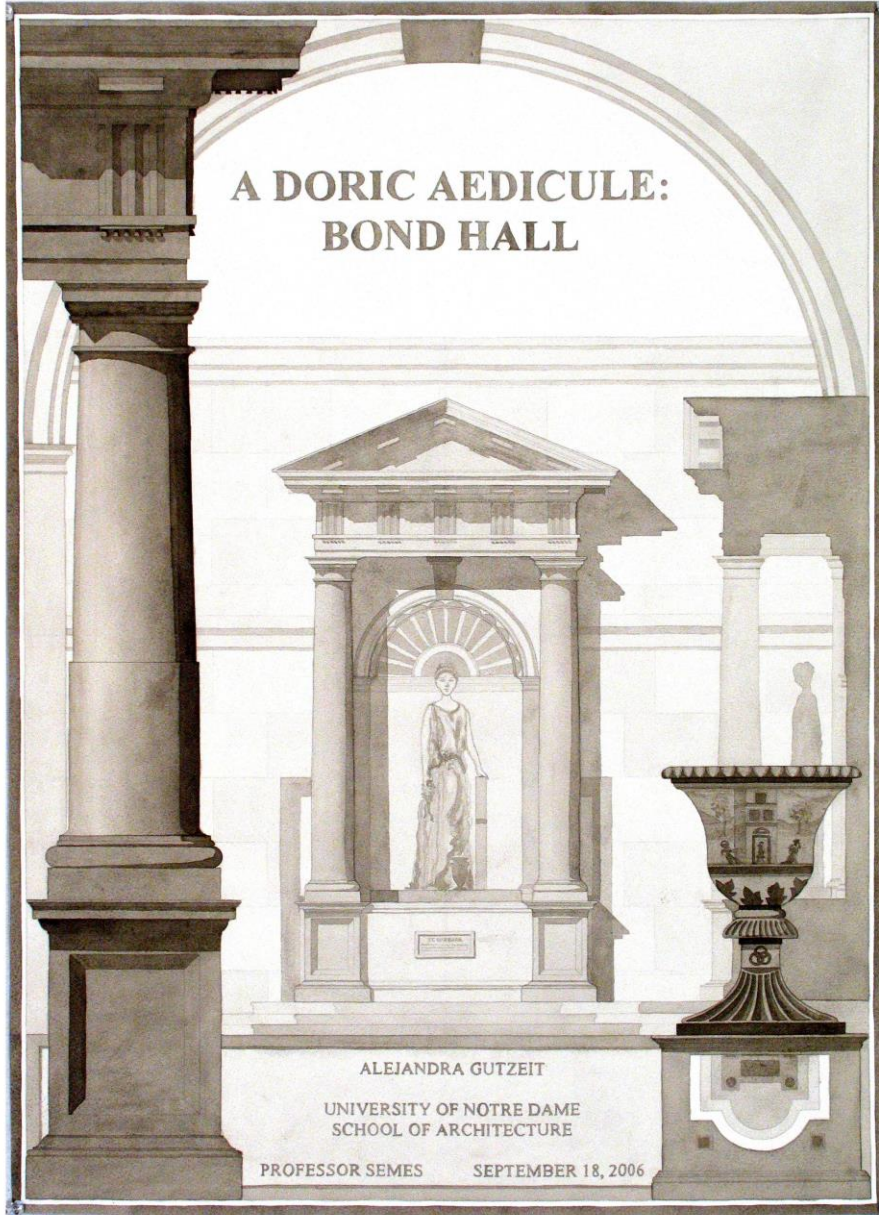
## ANALYTIQUE EXAMPLES





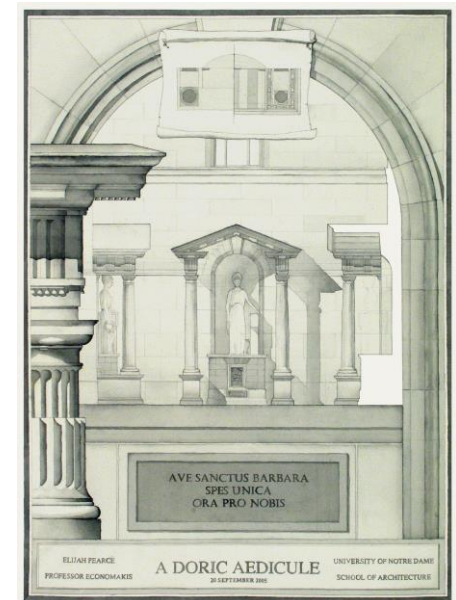
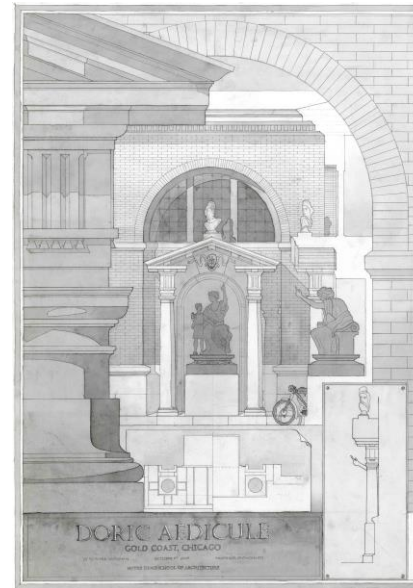
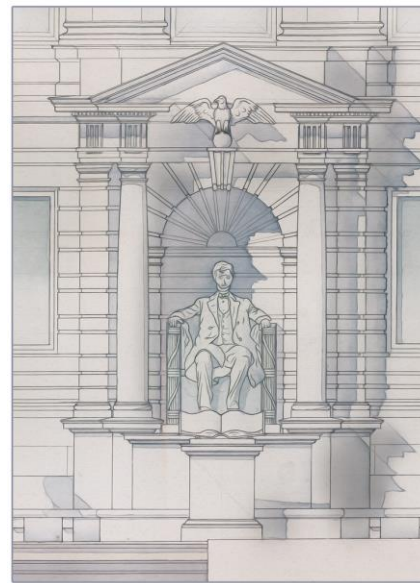
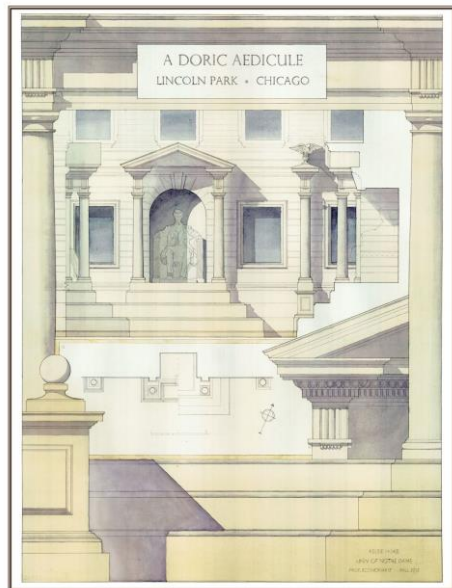
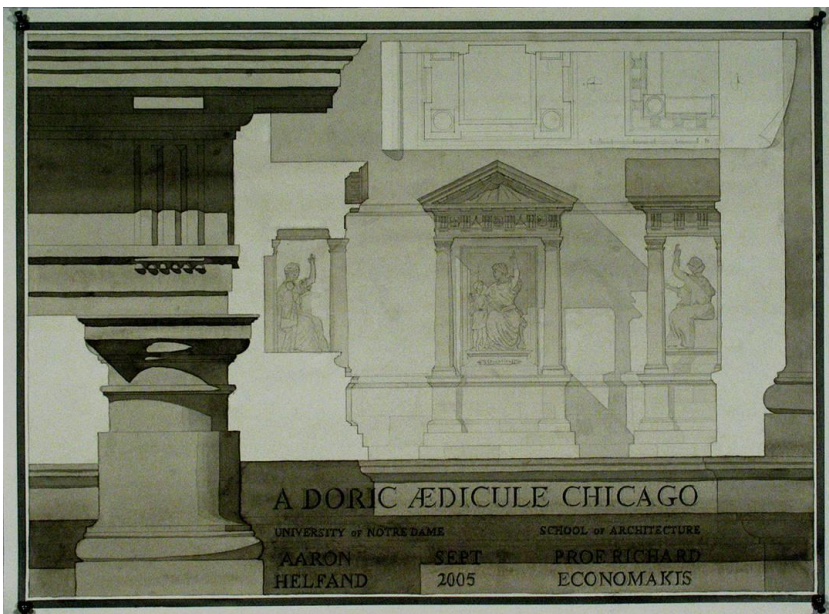
# ANALYTIQUE EXAMPLES





**ANALYTIQUE EXAMPLES**





# ANALYTIQUE EXAMPLES